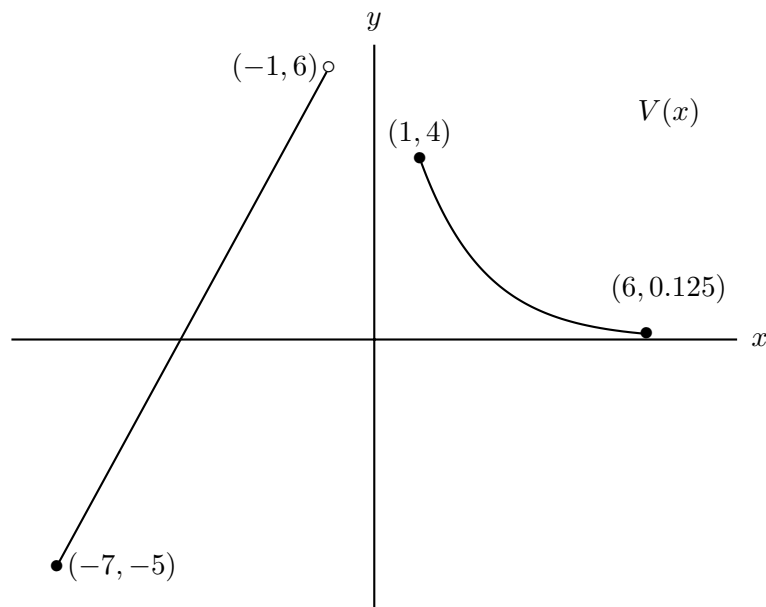


2. [11 points] Let $V(x)$ be a function whose graph is pictured below. It has two pieces - one piece is a **linear** function and one is an **exponential** function. Do not assume anything about this function outside of the part shown in the graph below.



Write a piecewise-defined formula for $V(x)$. For this problem you will be graded both on the correctness of your formulas for each piece and on the use of piecewise notation. Circle your final answer for $V(x)$.