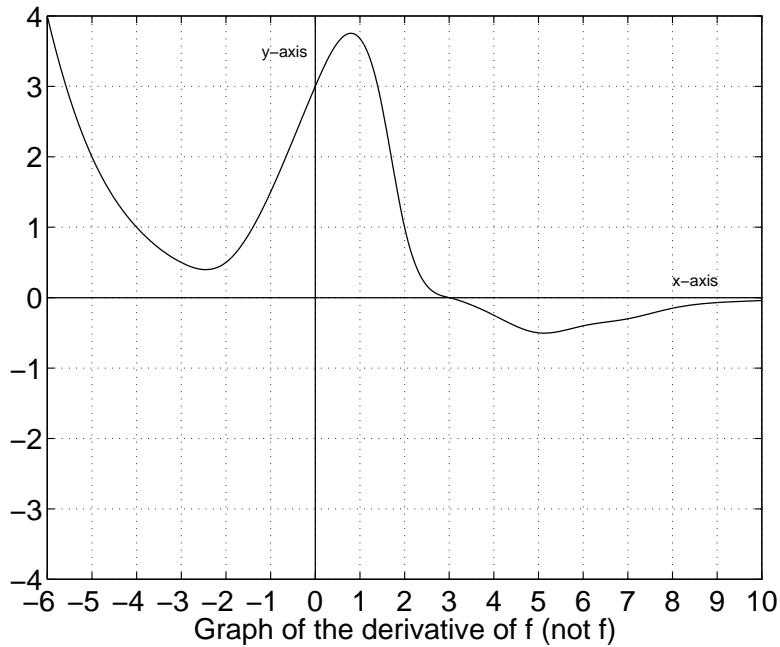


10. (10 points) The figure below gives the graph of the derivative  $f'$  of a function  $f$ .



(a) On what interval(s) is  $f$  increasing?

(b) On what interval(s) is  $f$  concave down?

(c) For what value of  $x$  (approximately) is  $f(x)$  the largest? Explain.

(d) For what value of  $x$  (approximately) is  $f''(x)$  the largest? Explain.