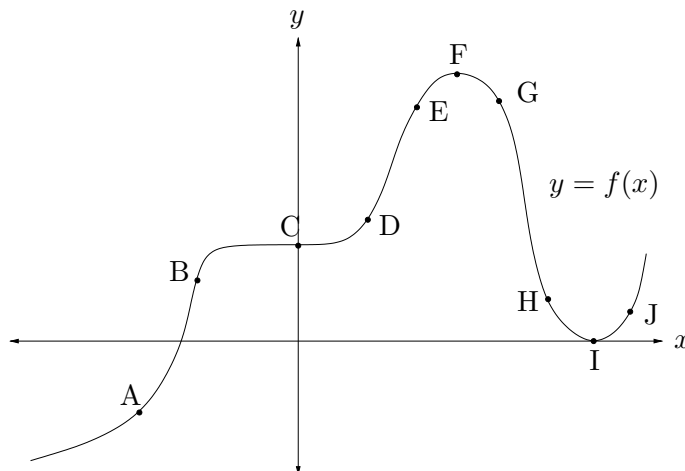


6. (11 points) The graph of a continuous differentiable function f is given below. Use the graph to answer the following. No explanation necessary.



- (a) List all labelled points (if any) where f' and f'' are both positive.
- (b) List all labelled points (if any) where f' and f'' are both negative.
- (c) List all labelled points (if any) where f and f' are both positive.
- (d) List all labelled points (if any) where f and f' are both both negative.
- (e) List all labelled points (if any) where at least two of f , f' , f'' are zero.