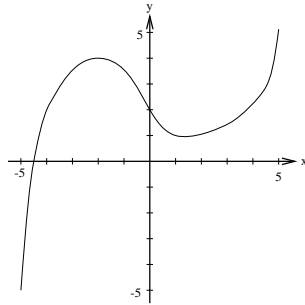


2. (9 pts.) For each of the graphs of $y = f(x)$ below, show how the indicated quantity can be represented as either the length of a line segment or as the slope of a line. If the quantity is a length, circle the word “length” and clearly draw and label the line segment. If the quantity is a slope, circle “slope” and draw and label the line for which the quantity represents the slope.

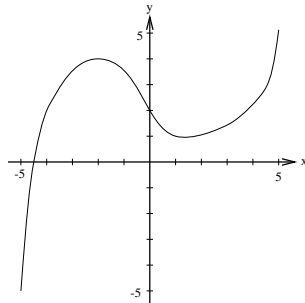
(i) $f(-2)$.



Length

Slope

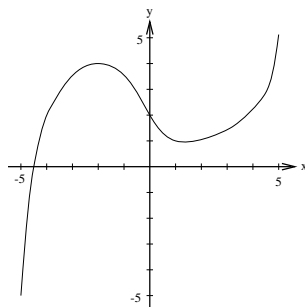
(ii) $f(5) - f(1)$



Length

Slope

(iii) $\frac{f(5) - f(1)}{5 - 1}$



Length

Slope