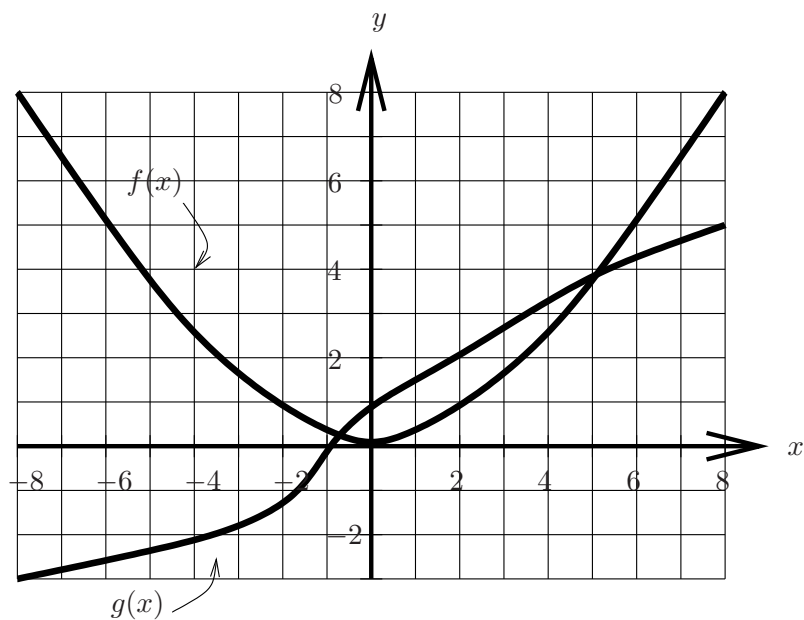


3. (16 points) The graphs of two functions, f and g are given in the figure below.



Use the graphs to estimate or answer each of the following.

(a) $f(g(2))$ _____

(b) $3g(-4)$ _____

(c) $g(f(2))$ _____

(d) $g(2) \cdot f(6)$ _____

(e) If $h(x) = f(x - 1)$, how is the graph of h related to the graph of f ?

(f) If $j(x) = g(-x)$, how is the graph of j related to the graph of g ?

(g) The **sign** of $f'(-4)$ is _____.

(h) The **sign** of $f''(-4)$ is _____.