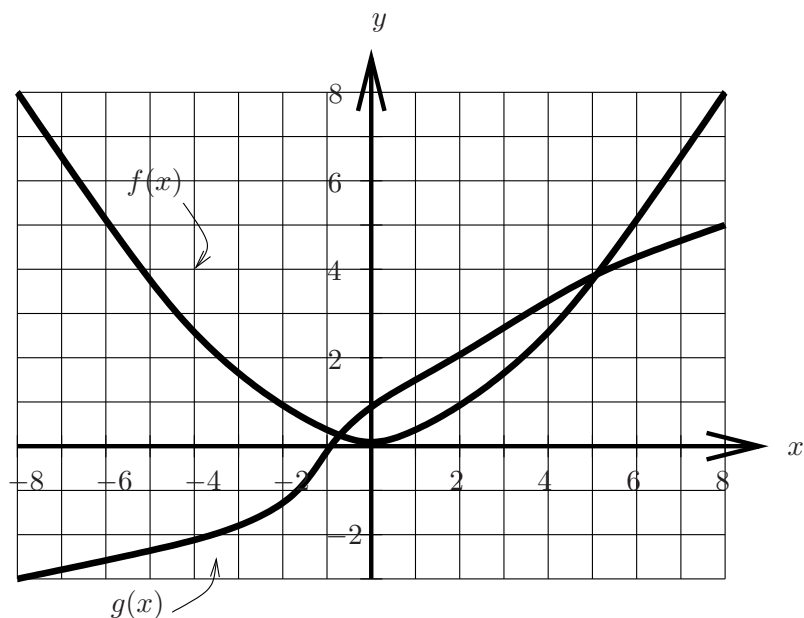


3. (16 points) The graphs of two functions, f and g are given in the figure below.



Use the graphs to estimate or answer each of the following.

(a) $f(g(2))$ 1

(b) $3g(-4)$ -6

(c) $g(f(2))$ 1.5

(d) $g(2) \cdot f(6)$ 10

(e) If $h(x) = f(x - 1)$, how is the graph of h related to the graph of f ?

The graph of h is the graph of f shifted one unit to the right.

(f) If $j(x) = g(-x)$, how is the graph of j related to the graph of g ?

The graph of j is the graph of g reflected over the y -axis.

(g) The sign of $f'(-4)$ is -.

(h) The sign of $f''(-4)$ is +.