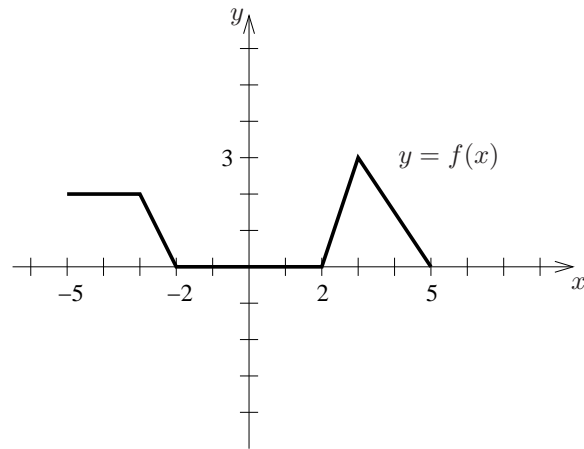
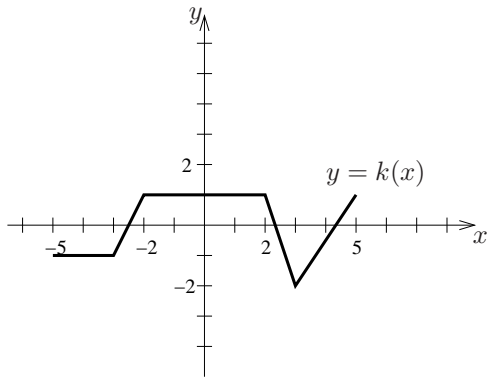


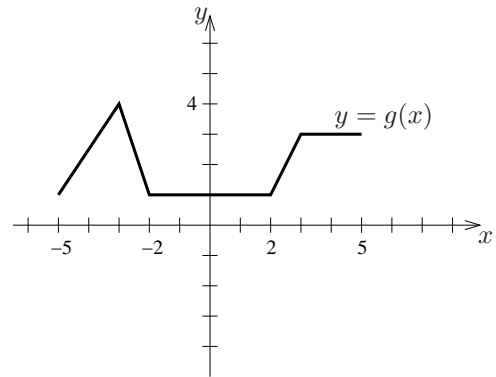
3. (12 points) The graph of  $y = f(x)$  is given by the figure below.



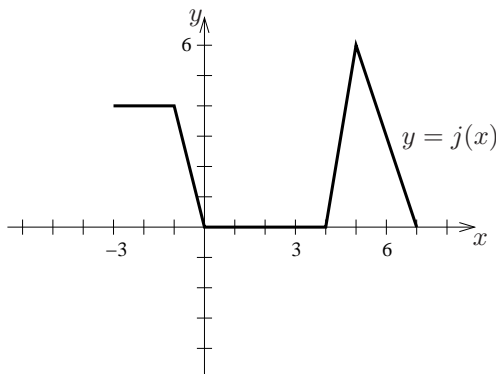
The graphs of the following functions are related to the graph of  $f$ . Determine a formula for each graph in terms of the function  $f$ .



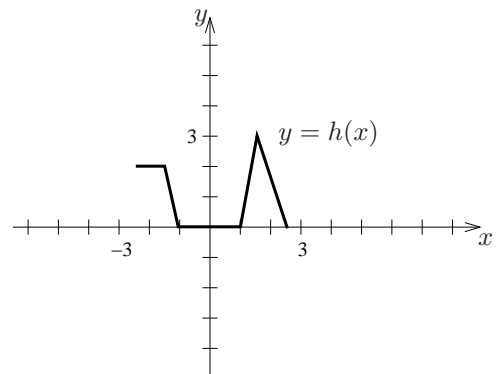
$$k(x) = \underline{\hspace{10em}}$$



$$g(x) = \underline{\hspace{10em}}$$



$$j(x) = \underline{\hspace{10em}}$$



$$h(x) = \underline{\hspace{10em}}$$