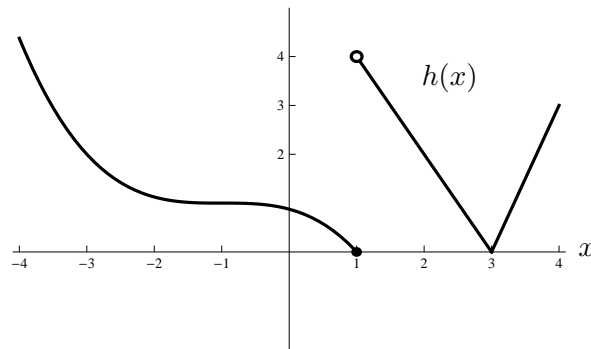


8. [10 points] The graph of a function  $h(x)$  is given below.



- a. [1 point] List all  $x$ -values with  $-4 < x < 4$  where  $h(x)$  is not continuous. If there are none, write NONE.

*Solution:*

$$x = 1$$

- b. [1 point] List all  $x$ -values with  $-4 < x < 4$  where  $h(x)$  is not differentiable. If there are none, write NONE.

*Solution:*

$$x = 1, 3$$

- c. [8 points] On the axes provided, carefully draw a graph of  $h'(x)$ . Be sure to label important points or features on your graph.

*Solution:*

