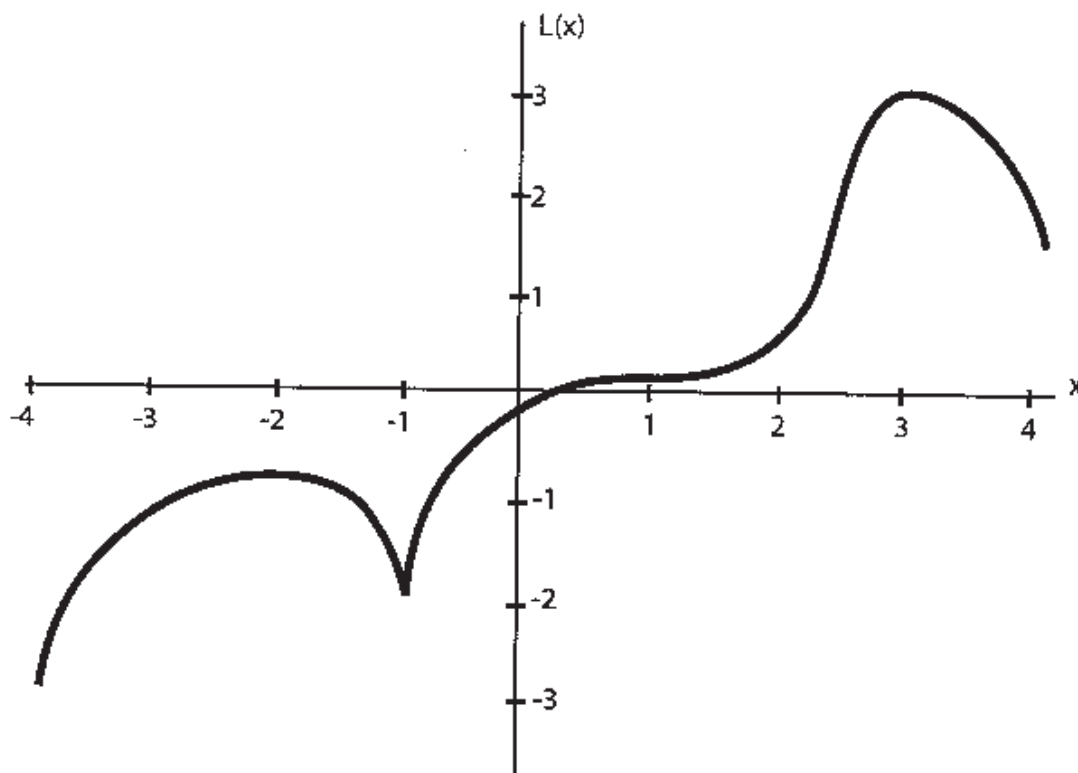


2. (12 points) A function $L(x)$ is graphed below. The domain of L is $[-4, 4]$ (i.e., just the region shown).



a) (4 pts) List all the values of x which are critical points. No explanation necessary.

$$x = \boxed{-2, -1, 1, 3}$$

b) (2 pts) Which value of x produces the global maximum value of $L(x)$? No explanation necessary.

$$x = \boxed{3}$$

c) (2 pts) Which value of x produces the global minimum value of $L(x)$? No explanation necessary.

$$x = \boxed{-4}$$

c) (4 pts) List all the values of x which give points of inflection. No explanation necessary.

$$x = \boxed{1, 2.5}$$

"values are approximate"