

2. [5 points] Shown on the axes below are portions of the graphs of $y = f(x)$, $y = f'(x)$, and $y = f''(x)$.

Determine which graph is which.

Write your answer as a list of the form

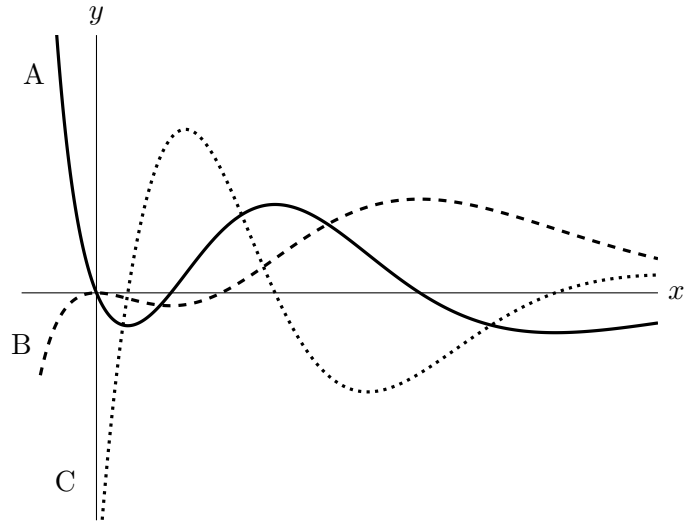
$f(x)$:

$f'(x)$:

$f''(x)$:

indicating after each function the letter A, B, or C that corresponds to its graph.

No work or justification is needed.



Solution:

$f(x)$: B

$f'(x)$: A

$f''(x)$: C