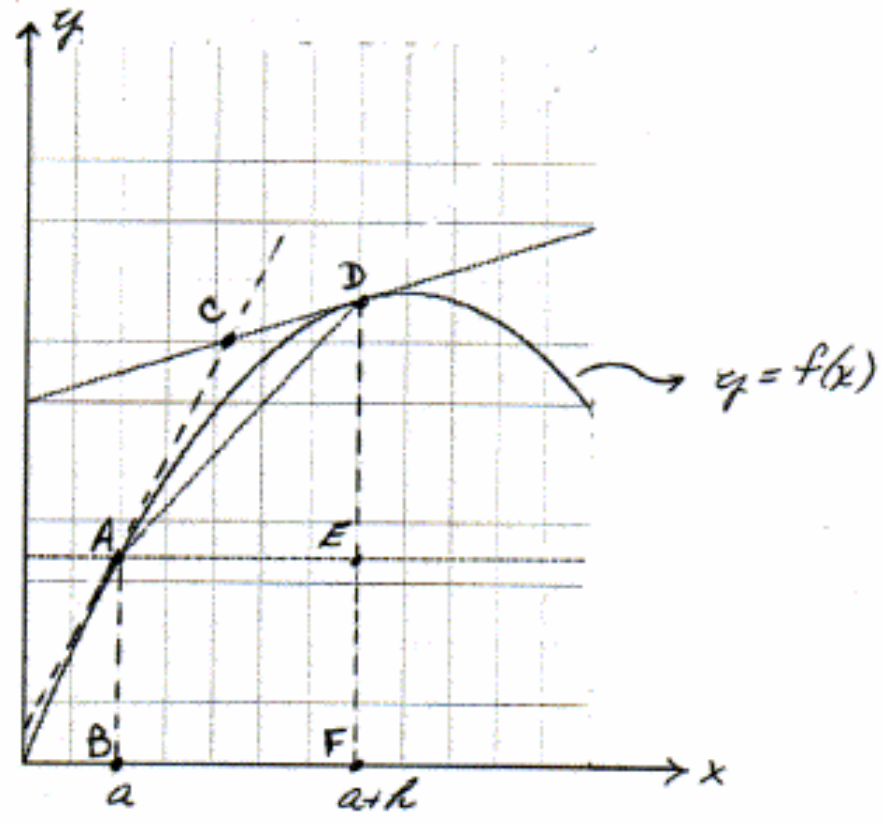


(4.) Each of the expressions below describes either a *length* or a *slope* of one of the lines shown in the figure below. In the first blank following each expression, write either the word "length" or "slope," and in the second blank use the letters from the figure to identify the line or line segment. Each line or segment must be identified by **two** letters. For example, if you were given "h," the answer would be

h is the length of the line between B & F.



(10 pts—2 pts each)

(a) $f(a)$ is the length of the line between A & B

(b) $f(a+h)$ is the length of the line between D & F

(c) $f(a+h) - f(a)$ is the length of the line between D & E

(d) $\frac{f(a+h) - f(a)}{h}$ is the slope of the line between A & D

(e) $\lim_{h \rightarrow 0} \frac{f(a+h) - f(a)}{h}$ is the slope of the line between A & C