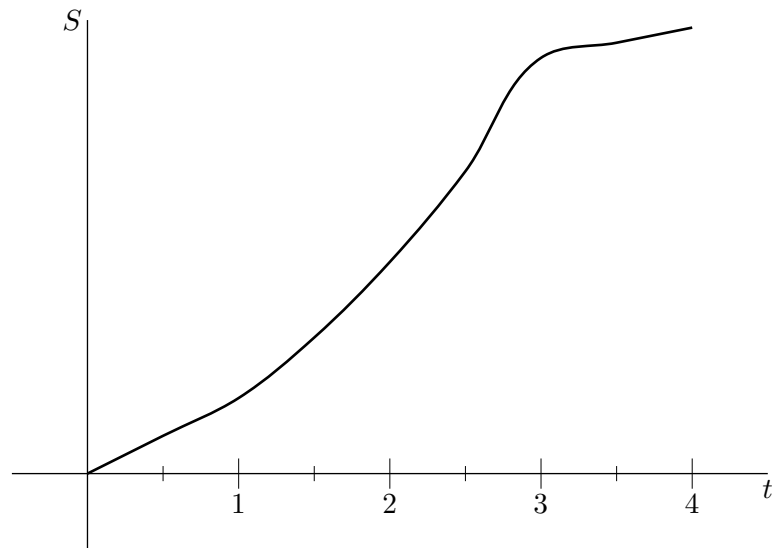


7. You decide to take a weekend off and drive down to Chicago. The graph below represents your distance  $S$  from Ann Arbor, measured in miles,  $t$  hours after you set out.



Let  $A(t)$  be the slope of the line connecting the origin  $(0, 0)$  to the point  $(t, S(t))$ .

- (a) (3 points) What does  $A(t)$  represent in everyday language?
- (b) (3 points) Estimate the time  $t$  at which  $A(t)$  is maximized. Write a one sentence explanation and use the graph above to justify your estimate.
- (c) (4 points) Use calculus to explain why  $A(t)$  has a critical point when the line connecting the origin to the point  $(t, S(t))$  is tangent to the curve  $S(t)$ .