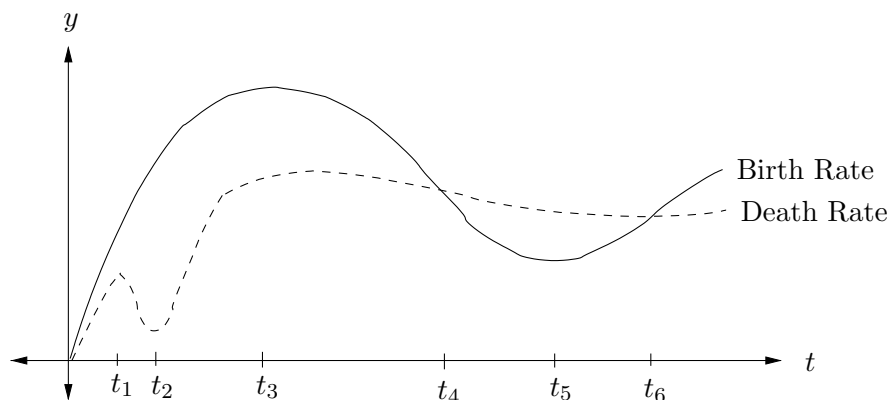


9. (8 points) Last year a local entomologist studied the birth and death rate of mosquitos in the Ann Arbor area during the month of May. His research yielded the following graph.



(a) Which of the labelled times t_1 through t_6 is the time when there were the largest number of mosquitos in Ann Arbor during May?

(b) Which of the labelled times t_1 through t_6 is the time when the quantity of mosquitos in Ann Arbor was increasing most rapidly during May?

(c) Sketch a possible graph of the number of mosquitos alive during the month of May on the axes below. Make sure to clearly indicate any maxima, minima, or inflection points.

