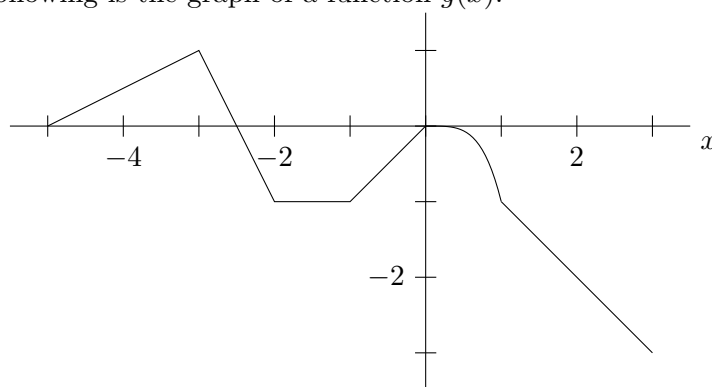


4. [10 points] The following is the graph of a function  $g(x)$ .



Note that  $g(x)$  is piecewise linear on  $[-5, 0]$  and linear on  $[1, 3]$ .

Let  $G(x)$  be an antiderivative of  $g(x)$  such that  $G(0) = 1$ . Carefully sketch a graph of  $G(x)$  using the axes provided below. In the blanks provided, give the values of  $G(-5)$  and  $G(-1)$  and be sure your graph is consistent with these values.

$$G(-5) = \underline{\hspace{2cm}} \qquad G(-1) = \underline{\hspace{2cm}}$$

