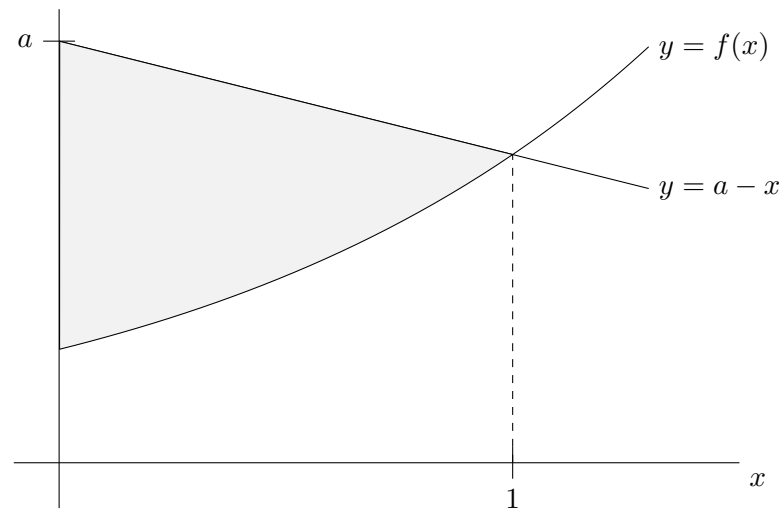


6. [7 points] A thin plate has the shape bounded by the curves $y = f(x)$, $y = a - x$ and the y -axis, for some positive constant a . The plate has a density of $\delta(x) = 7 + x$ kg/m².



- a. [4 points] Write an expression involving integrals that represents the total mass of the plate. Do not evaluate any integrals.
- b. [3 points] Write an expression involving integrals that represents the x -coordinate of the center of mass of the plate. Do not evaluate any integrals.